

# INSTALLATION AND OPERATION INSTRUCTIONS FOR BACK BAR & BEER DISPENSER



***LBB - 24 - 1B / 1S***  
***LBB - 60 - 2B / 2S***  
***LBB - 70 - 3B / 3S***  
***LBB - 90 - 3B / 3S***



***LBB - 24 - 1BG / 1SG***  
***LBB - 60 - 2BG / 2SG***  
***LBB - 70 - 3BG / 3SG***  
***LBB - 90 - 3BG / 3SG***



***LBD - 24 - 1B / 1S***  
***LBD - 60 - 2B / 2S***  
***LBD - 70 - 3B / 3S***  
***LBD - 90 - 3B / 3S***

## Contents

◆ Specifications .....	3
◆ Installation .....	4
◆ Maintenance & Cleaning .....	4
◆ Operation & Caution “ Important” .....	5
◆ Air Hose & Tower Installation Schematic Diagram.....	6
◆ Beer Line & CO <sub>2</sub> Line Installation Schematic Diagram.....	7
◆ Troubleshooting .....	8

## Specifications

Product		Back Bar			
Model		LBB-24-1B/1S	LBB-60-2B/2S	LBB-70-3B/3S	LBB-90-3B/3S
Capacity (cu.ft)		7	19	23	31.5
Exterior Dimensions [IN] (1B/1S - Including 4" Casters)	W	23 2/5	59	69	90 1/3
	D	29 1/2	27 1/9	27 1/9	27 1/9
	H	39 1/4	37	37	37
Net Weight (lbs)					
Rated Voltage		AC115V / 60Hz			
Compressor (HP)		1/5 HP	1/5 HP	1/3 HP	3/8 HP
Type of Power Cord		NEMA 5-15			
Shelves		2EA	4EA	4EA	6EA
Number of Doors		1	2	2	3
Refrigerant		R-134a			
Range of Temperature		32~40°F			

Product		Beer Dispenser			
Model		LBD-24-1B/1S	LBD-60-2B/2S	LBD-70-3B/3S	LBD-90-3B/3S
Capacity (cu.ft)		7	19	23	31.5
Exterior Dimensions [IN] (1B/1S - Including 4" Casters) (Except Height Tower)	W	23 2/5	59	69	90 1/3
	D	29 1/2	27 1/9	27 1/9	27 1/9
	H	39 1/4	37	37	37
Net Weight (lbs)					
Rated Voltage		AC115V / 50Hz			
Compressor (HP)		1/5 HP	1/5 HP	1/3 HP	3/8 HP
Type of Power Cord		NEMA 5-15			
1/2 Barrels		1EA	2EA	3EA	4EA
Number of Doors		1	2	2	3
Refrigerant		R-134a			
Range of Temperature		32~40°F			

- ◆ Specifications and Designs are subject to change without notice.
- ◆ The name plate (including Serial No.) is located on the upper left side of the cabinet interior.

## *Installation*

### 1. INDOOR USE ONLY

- This unit is intended for indoor use only.

### 2. FOR LOCATION

- Be sure that the location is strong enough to support the total weights of the unit and the content.
- Keep the unit away from sunlight and other heat generating equipment.
- The minimum clearance between the back of the unit and the wall should be 7 inches at least.

### 3. INSTALLING CASTORS

- Be sure that castors with brake should be installed in front.

### 4. LEVELING

- The unit should be leveled to provide adequate drainage.

### 5. ELECTRICAL CONNECTION

- The unit should be plugged into a 115V/60Hz, grounded wall receptacle to prevent electrical shock and fire hazards.
- Do not plug other electrical units into same wall receptacle this unit is plugged into.
- Do not use an extension cord.
- Compressor warranties are void if the compressor burns out due to low voltage.

### 6. INSTALLING SHELF

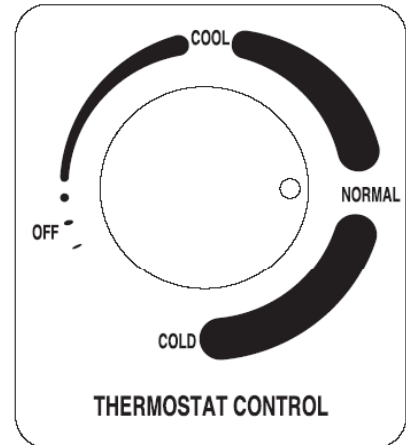
- Install shelves using shelf-clips provided in accessory.

## *Maintenance & Cleaning*

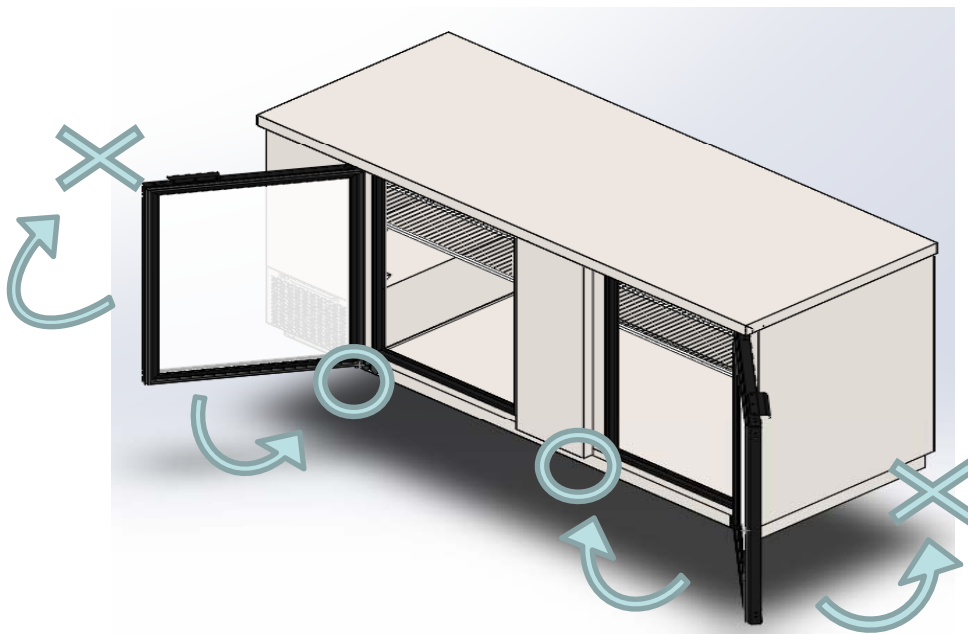
1. To maintain proper refrigeration performance, the condenser fins should be checked monthly and clean with a soft brush or vacuum cleaner as needed.
2. Wait at least 6mimutes after unplugging the unit before plugging in.
3. The interior and exterior of the unit can be cleaned using plugging in water.
  - Do not use an abrasive cleaners to avoid scratches on the surfaces.
4. The door-gasket should be cleaned to avoid maintain proper sealing.

## Operation

1. The temperature controller (thermostat) is located on the upper left of the back side of the cabinet interior.
2. The controller has been preset "NORMAL" position at the factory.
3. Set the control-knob toward "COOL" for higher temperature and "COLD" for lower temperature.
4. The thermostat controls compressor's ON/OFF by sensing inside temperatures of cabinet.
5. The unit is equipped with an off-cycle defrost

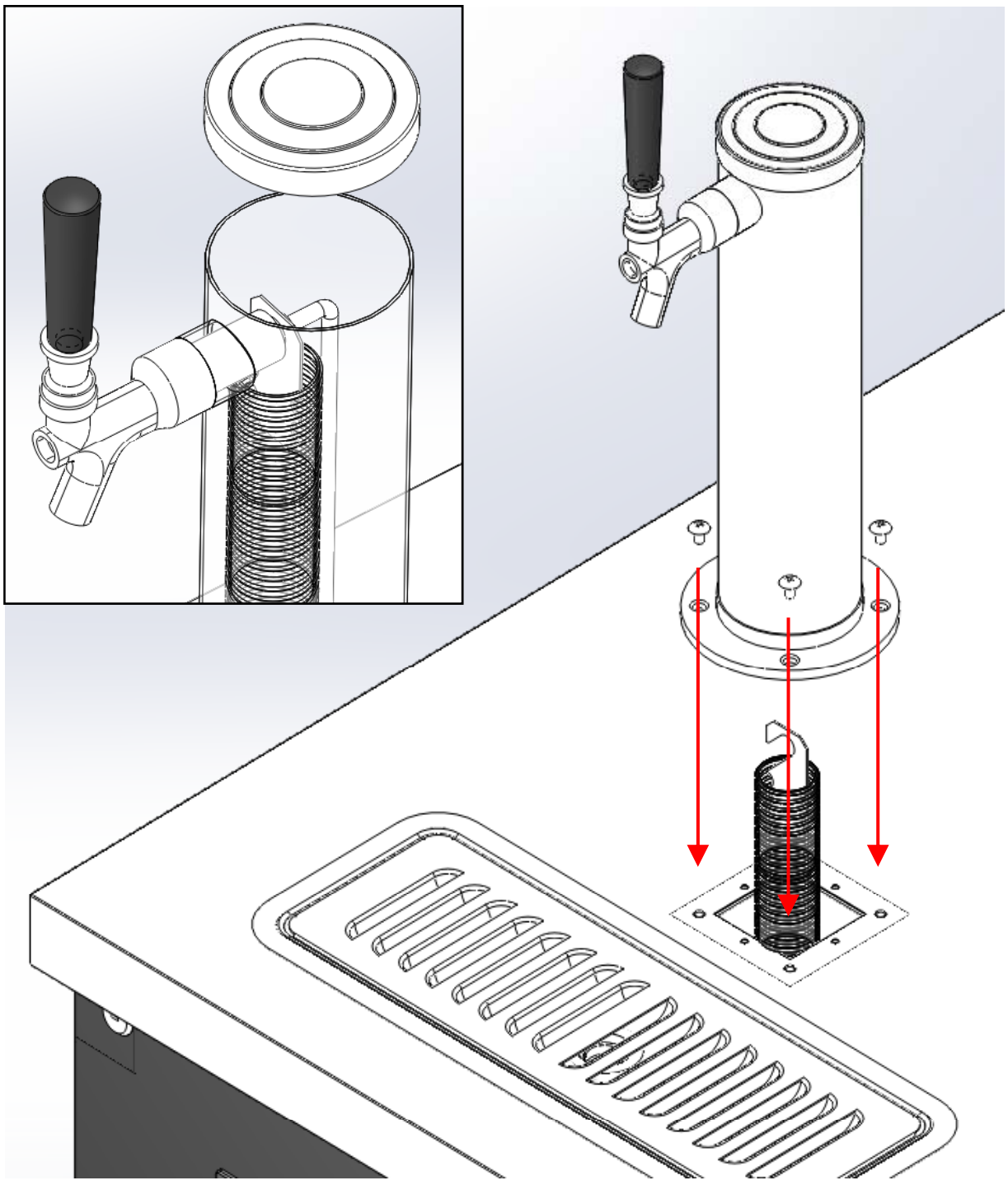


## Caution "Important"

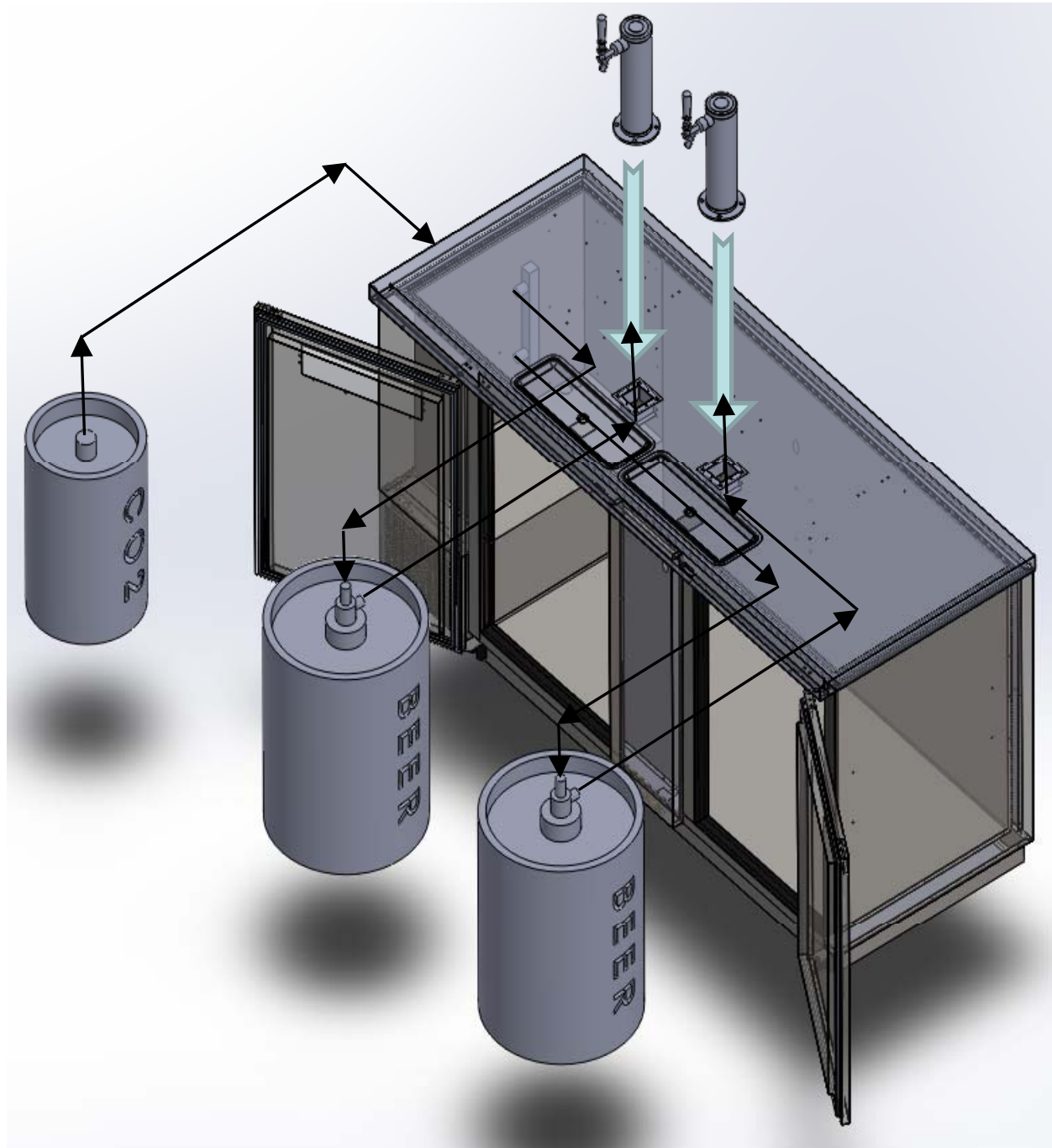


- ※ Excessively opening the door will cause the breakdown.
- ※ Handle with care as shutting the door.

*Air Hose & Tower Installation Schematic Diagram*



*Beer Line & CO<sub>2</sub> Line Installation Schematic Diagram*



※ Assemble Beer Line & CO<sub>2</sub> Line as above drawing.

## Troubleshooting

Problem	Possible Cause	Action
Compressor will not start	Power connection failure.	Check Power Cord and plug it in.
	Power switch is in off position.	Change it on position.
The unit does not refrigerate well	Temperature set point is too high.	Correct temperature set point.
	The door is opened too frequently.	Do not open the door frequently.
	Loading of too much warm or moist product.	Do not load warm or moist product.
	Not enough ventilation.	Move the unit in a well ventilated place with at least 7inches of clearance on all sides.
	Condenser is clogged.	Clean it.
Condensation on cabinet exterior	High moisture air can produce dews during the rainy season.	Wipe with cloth.

※ The following is not an indication of problem or malfunction.

A water-flowing sound can be heard when the unit is operating.

This is the sound of refrigerant flowing.